



Current Data Parameters
NAME FR-50
EXPNO 5
PROCNO 1

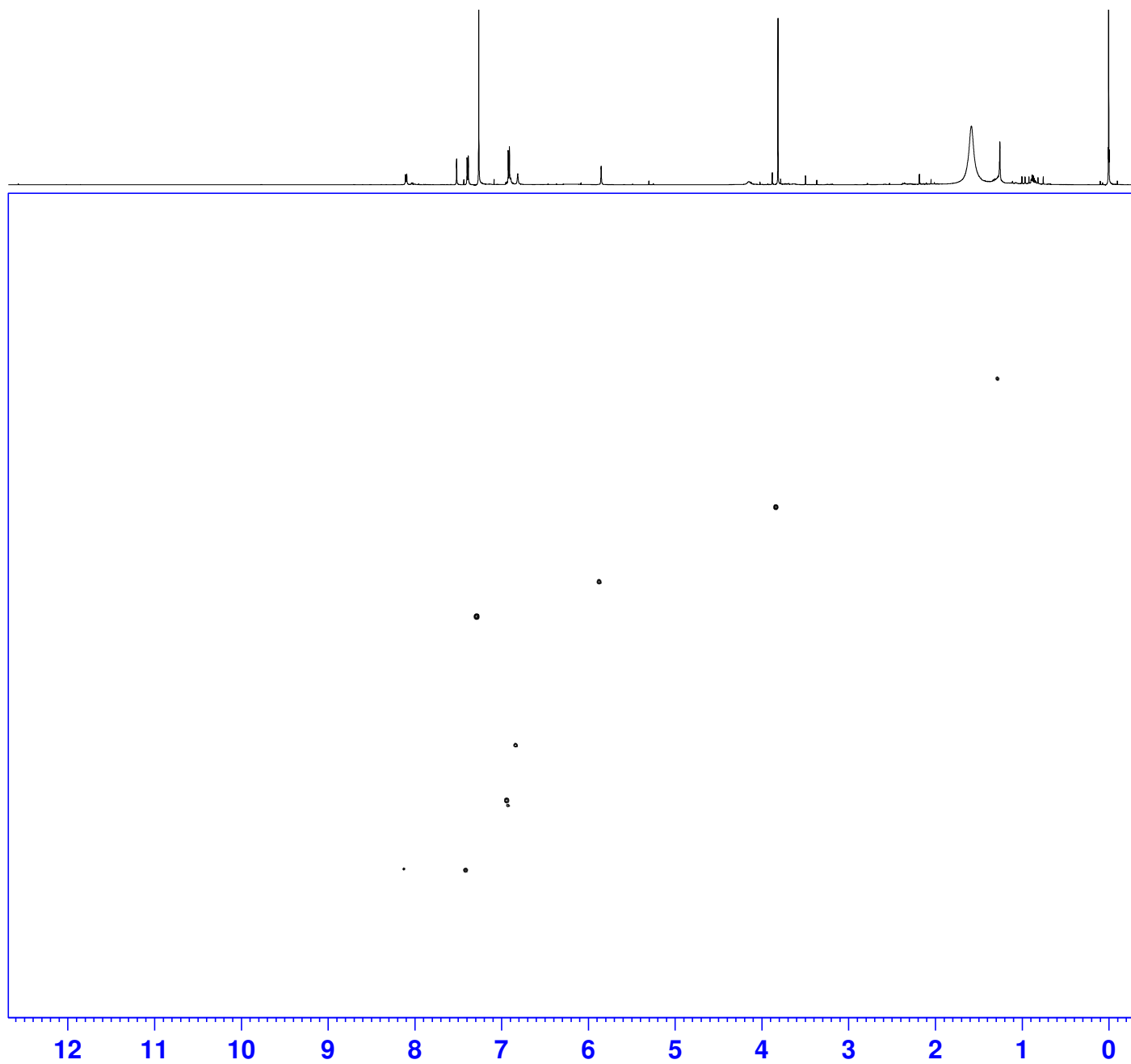
F2 - Acquisition Parameters

Date_ 20200723
Time 1.29 h
INSTRUM spect
PROBHD Z44896_0022 (C
PULPROG hsqcetgpsi2
TD 1024
SOLVENT CDCl3
NS 2
DS 16
SWH 7812.500 Hz
FIDRES 15.258789 Hz
AQ 0.0655360 sec
RG 186.75
DW 64.000 usec
DE 13.98 usec
TE 298.0 K
CNST2 145.0000000
D0 0.00000300 sec
D1 1.50000000 sec
D4 0.00172414 sec
D11 0.03000000 sec
D16 0.00020000 sec
D24 0.00086207 sec
IN0 0.00002010 sec
TDAV 1
ZGPGTNS
SFO1 599.9687048 MHz
NUC1 1H
P1 12.00 usec
P2 24.00 usec
P28 0 usec
PLW1 3.59750009 W
SFO2 150.8726338 MHz
NUC2 13C
CPDPRG[2] garp
P3 15.00 usec
P4 30.00 usec
PCPD2 60.00 usec
PLW2 90.00000000 W
PLW12 5.62500000 W
GPNAM[1] SMSQ10.100
GPZ1 80.00 %
GPNAM[2] SMSQ10.100
GPZ2 20.10 %
GPNAM[3] SMSQ10.100
GPZ3 11.00 %
GPNAM[4] SMSQ10.100
GPZ4 -5.00 %
P16 1000.00 usec
P19 600.00 usec

F1 - Acquisition parameters
TD 256
SFO1 150.8726 MHz
FIDRES 194.340790 Hz
SW 164.878 ppm
FnMODE Echo-Antiecho

F2 - Processing parameters
SI 1024
SF 599.9650000 MHz
WDW QSINE
SSB 2
LB 0 Hz
GB 0
PC 1.40

F1 - Processing parameters
SI 1024
MC2 echo-antiecho
SF 150.8613192 MHz
WDW QSINE
SSB 2
LB 0 Hz
GB 0



ppm

0

20

40

60

80

100

120

140

ppm