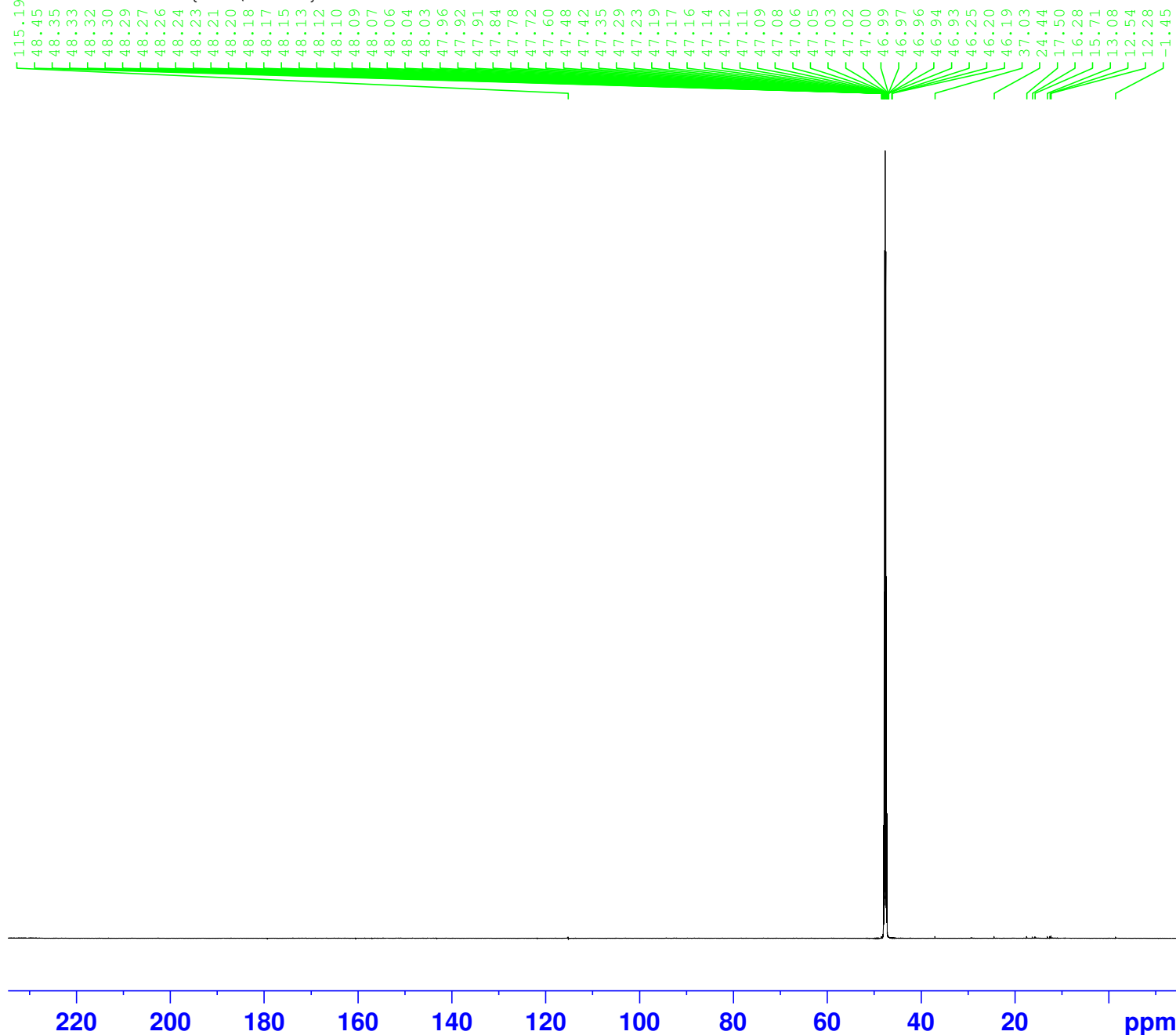


C NMR OF limingqiong-7P-G3-2
G13CPD MeOD {D:\DATA} suowaidanwei 10



Current Data Parameters
NAME limingqiong-7P-G3-2
EXPNO 11
PROCNO 1

F2 - Acquisition Parameters
Date_ 20220827
Time 11.28 h
INSTRUM spect
PROBHD Z120187_0028 (
PULPROG zgpg30
TD 32768
SOLVENT MeOD
NS 6000
DS 8
SWH 43859.648 Hz
FIDRES 2.676980 Hz
AQ 0.3735552 sec
RG 181.26
DW 11.400 usec
DE 18.00 usec
TE 298.0 K
D1 1.00000000 sec
D11 0.03000000 sec
TD0 1
SFO1 176.0797677 MHz
NUC1 13C
P0 4.00 usec
P1 12.00 usec
PLW1 127.62999725 W
SFO2 700.1828007 MHz
NUC2 1H
CPDPRG[2] waltz16
PCPD2 65.00 usec
PLW2 9.00000000 W
PLW12 0.12794000 W
PLW13 0.06442500 W

F2 - Processing parameters
SI 32768
SF 176.0604010 MHz
WDW EM
SSB 0
LB 3.00 Hz
GB 0
PC 1.40