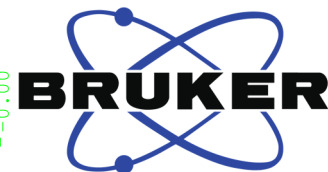
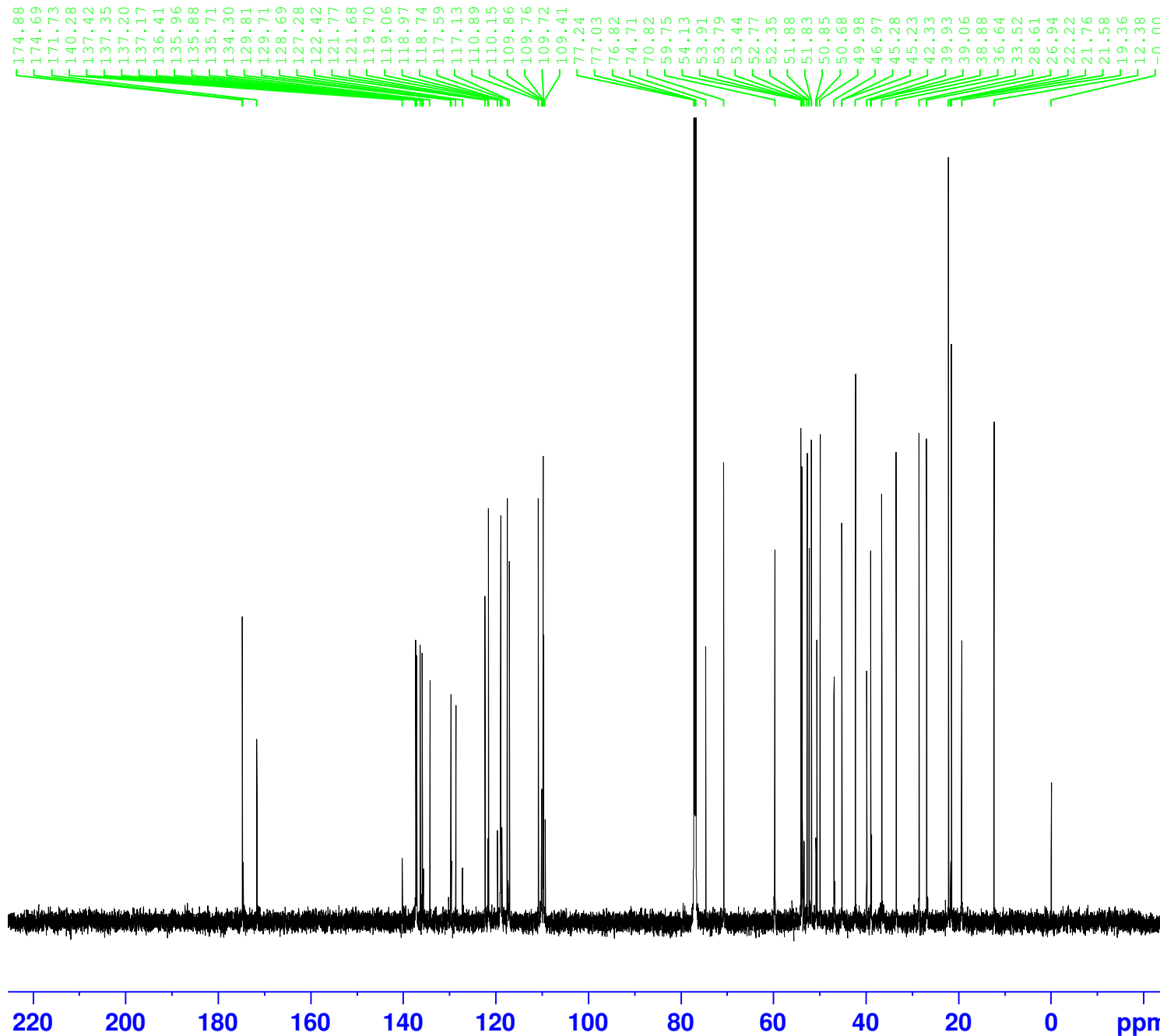


SY29-13C



Current Data Parameters
NAME Jul03-2020-SY29
EXPNO 2
PROCNO 1

F2 - Acquisition Parameters
Date_ 20200704
Time 0.22
INSTRUM spect
PROBHD 5 mm PABBO BB-
PULPROG zgpg30
TD 65536
SOLVENT CDC13
NS 12000
DS 4
SWH 37878.789 Hz
FIDRES 0.577984 Hz
AQ 0.8650752 sec
RG 179.76
DW 13.200 usec
DE 6.50 usec
TE 292.9 K
D1 2.00000000 sec
D11 0.03000000 sec
TD0 1

===== CHANNEL f1 =====
SFO1 150.9178993 MHz
NUC1 13C
P1 12.00 usec
PLW1 106.00000000 W

===== CHANNEL f2 =====
SFO2 600.1324005 MHz
NUC2 1H
CPDPRG[2] waltz16
PCPD2 80.00 usec
PLW2 20.00000000 W
PLW12 0.50119001 W
PLW13 0.28799999 W

F2 - Processing parameters
SI 32768
SF 150.9028127 MHz
WDW EM
SSB 0
LB 1.00 Hz
GB 0
PC 1.40