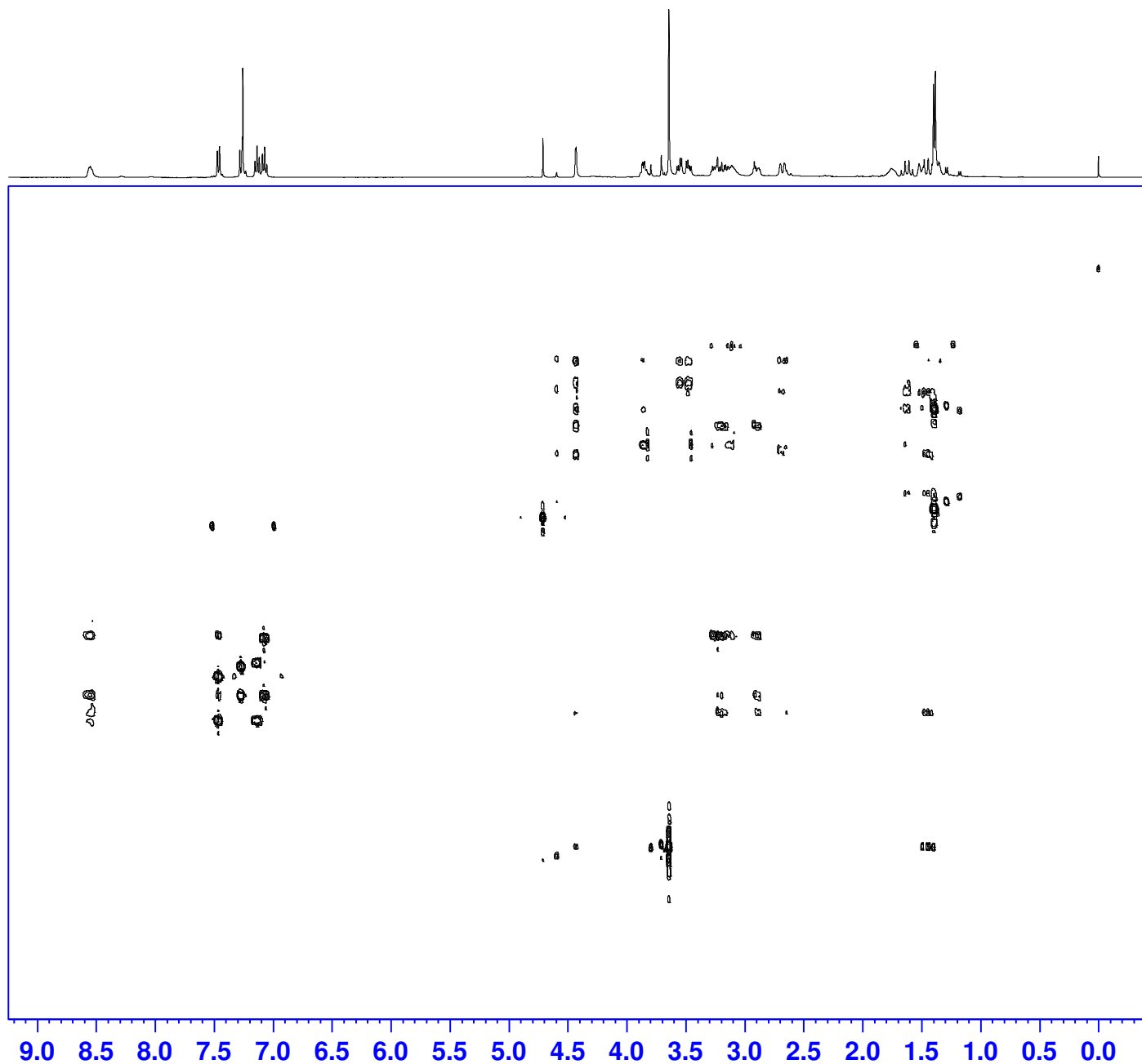




Current Data Parameters
NAME Jun29-2020-SY
EXPNO 45
PROCNO 1



F2 - Acquisition Parameters
Date_ 20200630
Time_ 1.40
INSTRUM spect
PROBHD 5 mm PABBO BB/
PULPROG hmbcgp1pndqf
TD 2048
SOLVENT CDC13
NS 132
DS 16
SWH 3875.969 Hz
FIDRES 1.892563 Hz
AQ 0.2641920 sec
RG 200.65
DW 129.000 usec
DE 6.50 usec
TE 300.0 K
CNST2 145.0000000
CNST13 10.0000000
D0 0.00000300 sec
D1 1.40620196 sec
D2 0.00344828 sec
D6 0.05000000 sec
D16 0.00020000 sec
IN0 0.00001990 sec

===== CHANNEL f1 =====
SFO1 400.1317739 MHz
NUC1 1H
P1 15.00 usec
P2 30.00 usec
PLW1 15.00000000 W

===== CHANNEL f2 =====
SFO2 100.6228303 MHz
NUC2 13C
P3 11.00 usec
PLW2 52.00000000 W

===== GRADIENT CHANNEL =====
GPNAM[1] SMSQ10.100
GPNAM[2] SMSQ10.100
GPNAM[3] SMSQ10.100
GPZ1 50.00 %
GPZ2 30.00 %
GPZ3 40.10 %
P16 1000.00 usec

F1 - Acquisition parameters
TD 128
SFO1 100.6228 MHz
FIDRES 196.293976 Hz
SW 249.701 ppm
FnMODE QF

F2 - Processing parameters
SI 2048
SF 400.1300113 MHz
WDW SINE
SSB 0
LB 0 Hz
GB 0
PC 1.40

F1 - Processing parameters
SI 1024
MC2 QF
SF 100.6127690 MHz
WDW SINE
SSB 0
LB 0 Hz
GB 0