

HSQC_SY31_2_3



Current Data Parameters
 NAME Jun29-2020-SY
 EXPNO 43
 PROCNO 1

F2 - Acquisition Parameters
 Date_ 20200629
 Time 19.59
 INSTRUM spect
 PROBHD 5 mm PABBO BB/
 PULPROG hsqcedetgpg
 TD 1024
 SOLVENT CDCl3
 NS 24
 DS 16
 SWH 3906.250 Hz
 FIDRES 3.814697 Hz
 AQ 0.1310720 sec
 RG 200.65
 DW 128.000 usec
 DE 6.50 usec
 TE 300.0 K
 CNST2 145.0000000
 D0 0.00000300 sec
 D1 1.45412505 sec
 D4 0.00172414 sec
 D11 0.03000000 sec
 D13 0.00000400 sec
 D16 0.00020000 sec
 D21 0.00345000 sec
 INO 0.00001990 sec
 ZGPGTNS

===== CHANNEL f1 =====
 SFO1 400.1317647 MHz
 NUC1 1H
 P1 15.00 usec
 P2 30.00 usec
 P28 1000.00 usec
 PLW1 15.00000000 W

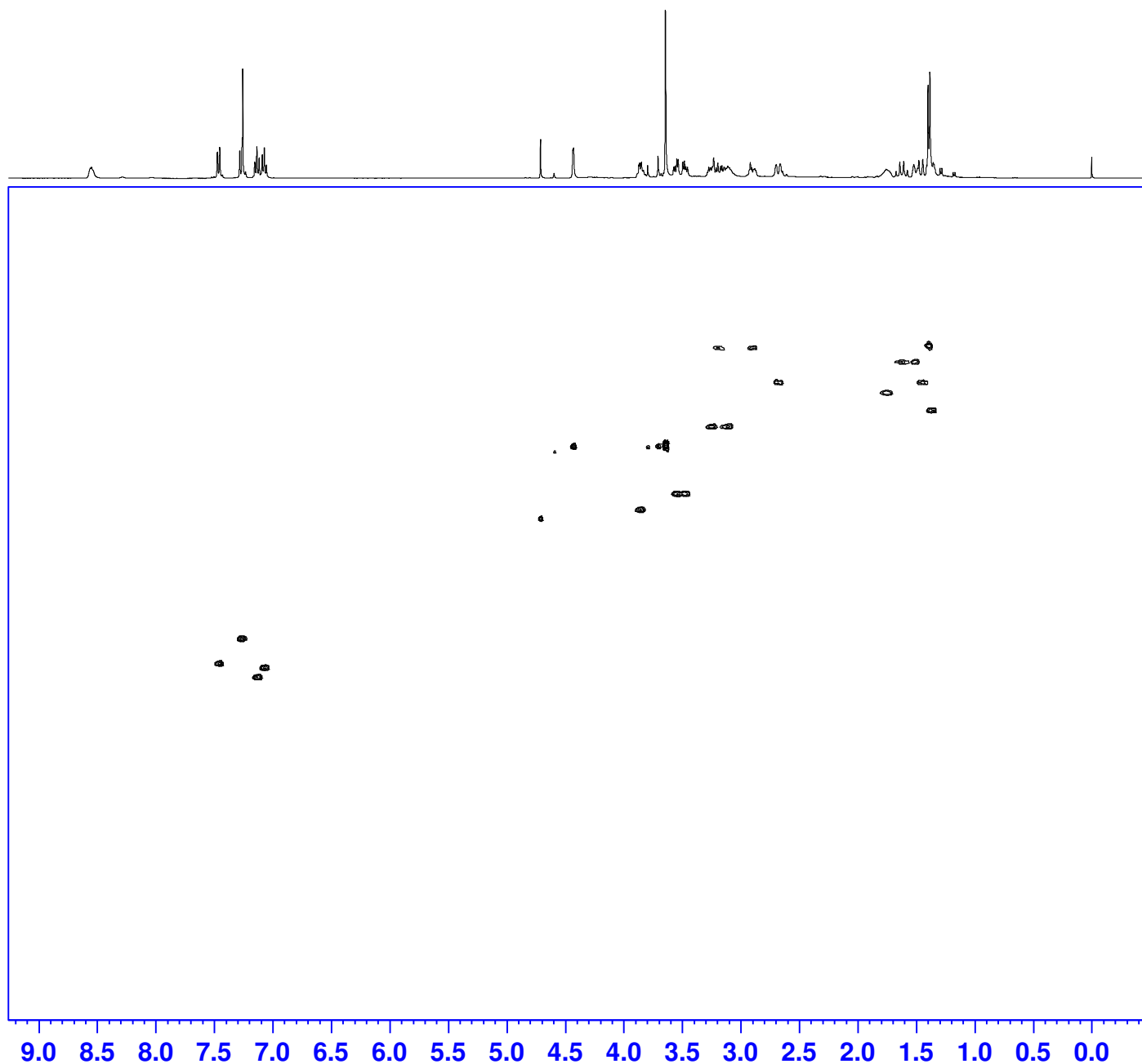
===== CHANNEL f2 =====
 SFO2 100.6228303 MHz
 NUC2 13C
 CPDPRG[2] garp
 P3 11.00 usec
 P4 22.00 usec
 PCPD2 80.00 usec
 PLW2 52.00000000 W
 PLW12 0.98312998 W

===== GRADIENT CHANNEL =====
 GPNAM[1] SMSQ10.100
 GPNAM[2] SMSQ10.100
 GPZ1 80.00 %
 GPZ2 20.10 %
 P16 1000.00 usec

F1 - Acquisition parameters
 TD 256
 SFO1 100.6228 MHz
 FIDRES 98.146988 Hz
 SW 249.701 ppm
 F1MODE Echo-Antiecho

F2 - Processing parameters
 SI 1024
 SF 400.1300113 MHz
 WDW QSINE
 SSB 2
 LB 0 Hz
 GB 0
 PC 1.40

F1 - Processing parameters
 SI 1024
 MC2 echo-antiecho
 SF 100.6127690 MHz
 WDW QSINE
 SSB 2
 LB 0 Hz
 GB 0



ppm

-20

0

20

40

60

80

100

120

140

160

180

200

220

ppm