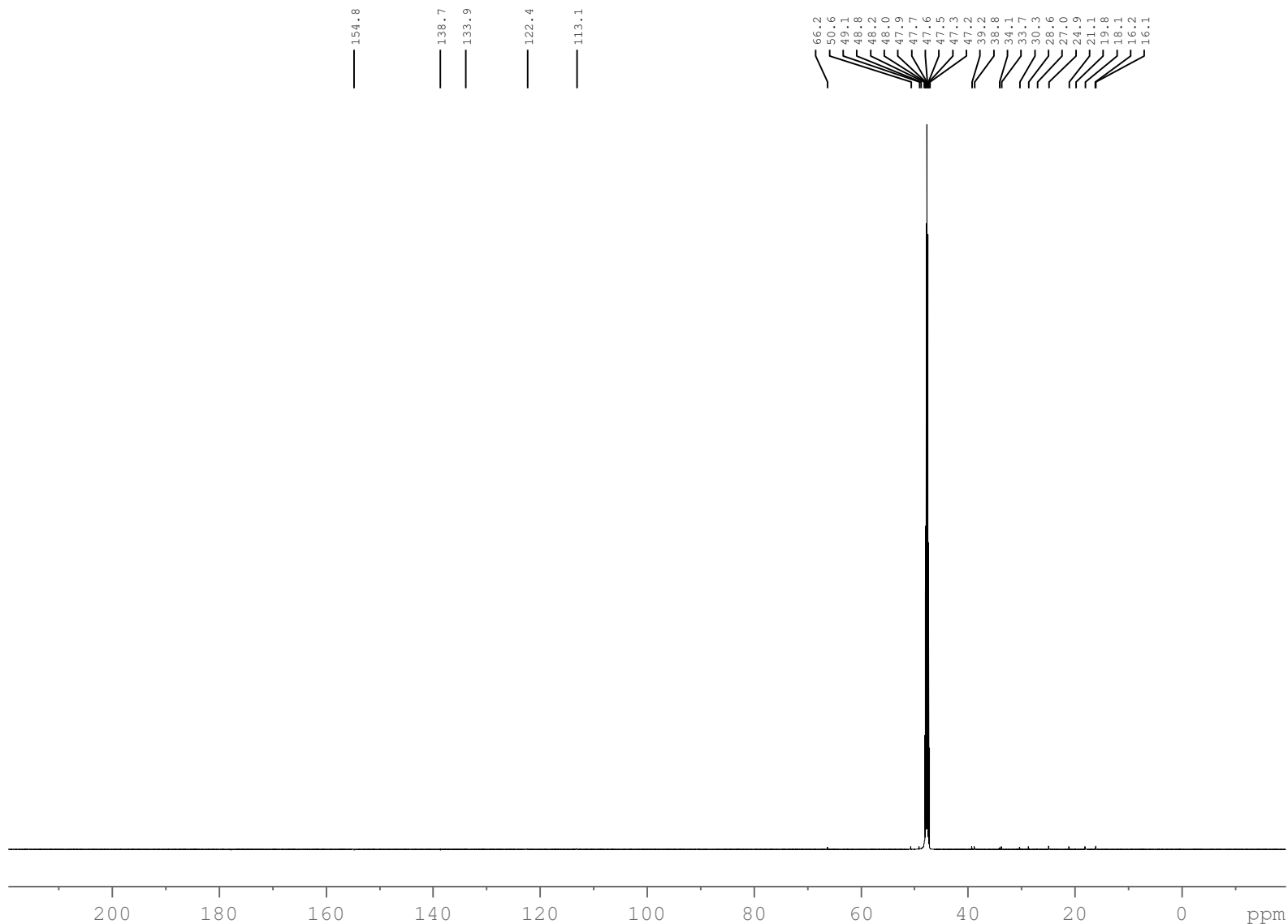


YZ-KU006-6-1

C13 MeOD {E:\current_data} NPP 15



Current Data Parameters
NAME NPP.180619.a600
EXPNO 61
PROCNO 1

F2 - Acquisition Parameters
Date_ 20180620
Time 2.38
INSTRUM spect
PROBHD 5 mm CPDCH 13C
PULPROG zgpg30
TD 65536
SOLVENT MeOD
NS 512
DS 4
SWH 36057.691 Hz
FIDRES 0.550197 Hz
AQ 0.9087659 sec
RG 201.73
DW 13.867 usec
DE 18.00 usec
TE 300.0 K
D1 2.00000000 sec
D11 0.03000000 sec
TD0 1

===== CHANNEL f1 =====
SFO1 150.8474842 MHz
NUC1 13C
P1 9.45 usec
PLW1 26.00000000 W

===== CHANNEL f2 =====
SFO2 599.8523995 MHz
NUC2 1H
CPDPRG[2] waltz16
PCPD2 80.00 usec
PLW2 18.75000000 W
PLW12 0.29005000 W
PLW13 0.18562999 W

F2 - Processing parameters
SI 65536
SF 150.8324030 MHz
WDW EM
SSB 0
LB 1.00 Hz
GB 0
PC 1.40